

# Architecture + Design



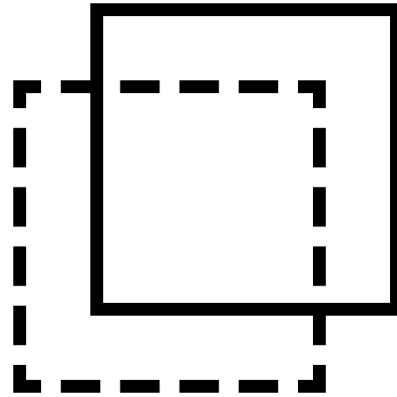
**DREAM Charter School**  
New York, NY  
LEED ID+C: Commercial Interiors,  
v2009 LEED Gold

**“Responsible design  
is not a nice-to-have,  
it’s a need-to-have.”**

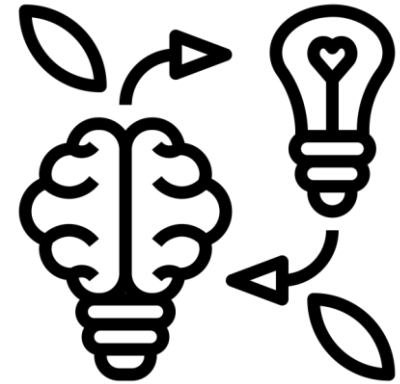
*- Janet Joseph, New York State Energy Research and Development Authority (NYSERDA)  
Metropolis Magazine, May 2019*



**HOW I GOT  
HERE**



**WHY PRODUCT  
TRANSPARENCY IS  
IMPORTANT**

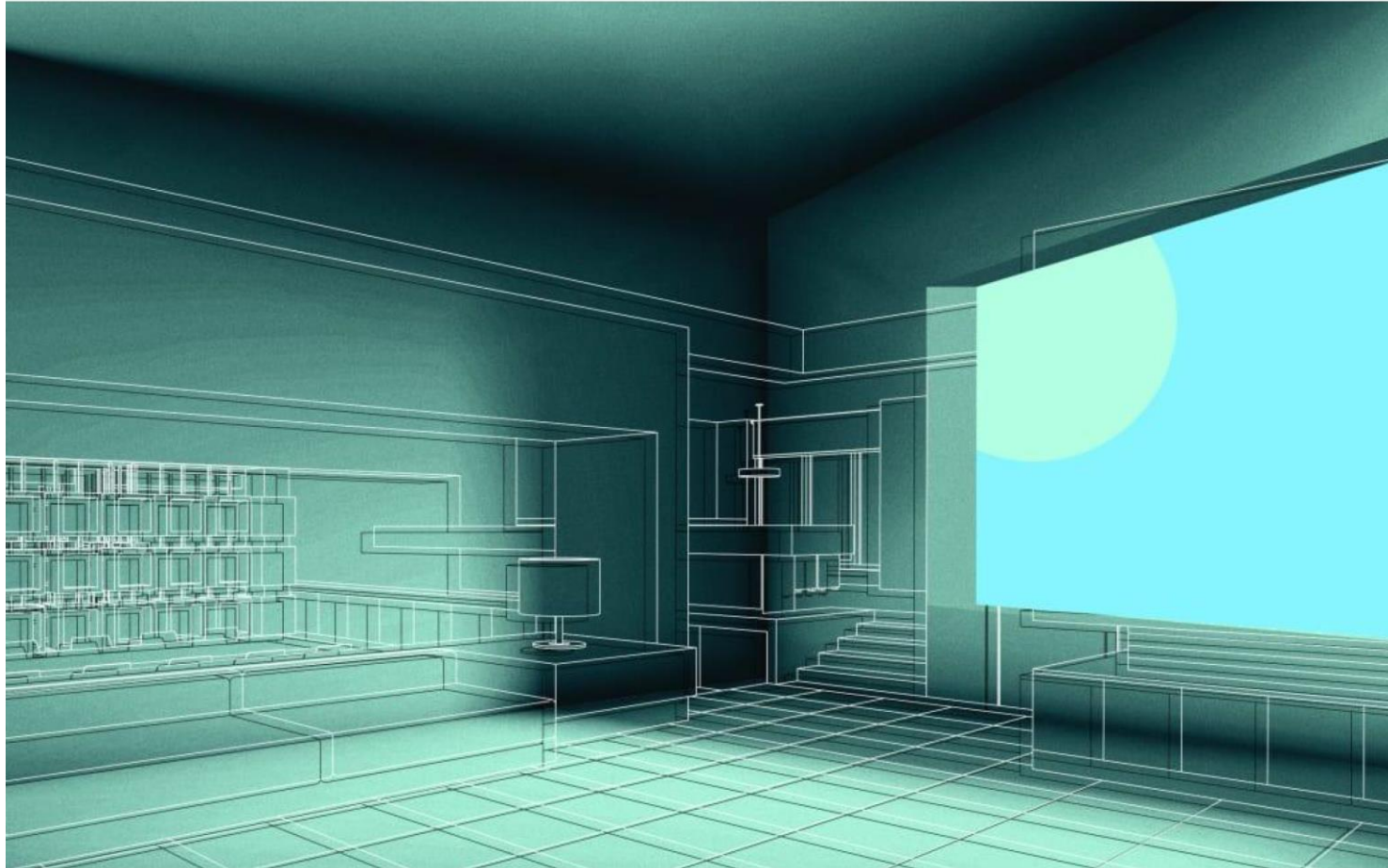


**HOW WE CAN MAKE  
COLLECTIVE  
CHANGE**

01-13-20

## It's past time for interior designers to make climate commitments

Architects and landscape designers have pledged radical changes in how they work to help combat climate change. Interior designers need to follow suit—now, writes Studio O+A's Verda Alexander.





# THE SIX CLASSES OF HARMFUL CHEMICALS

1

Highly  
Fluorinated



2

Antimicrobials



3

Flame  
Retardants



4

Bisphenols  
+ Phthalates



5

Some  
Solvents



6

Certain Metals



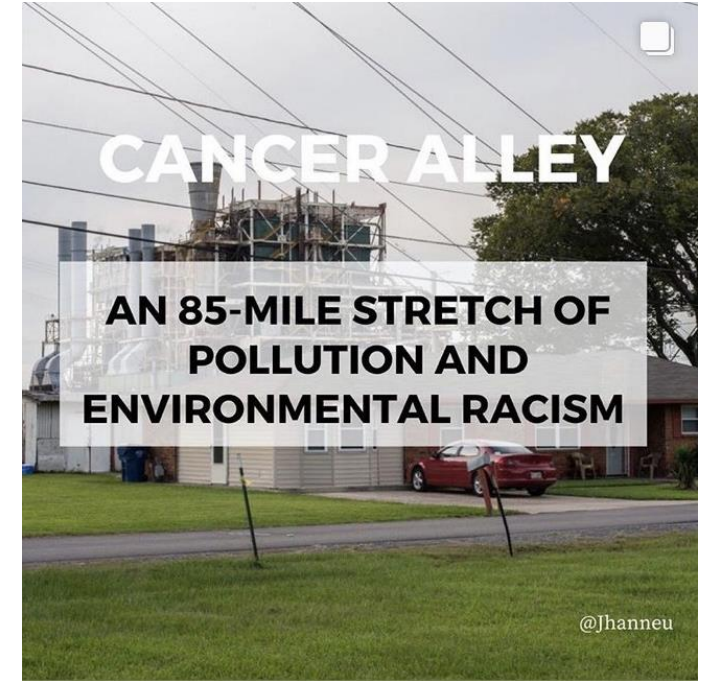
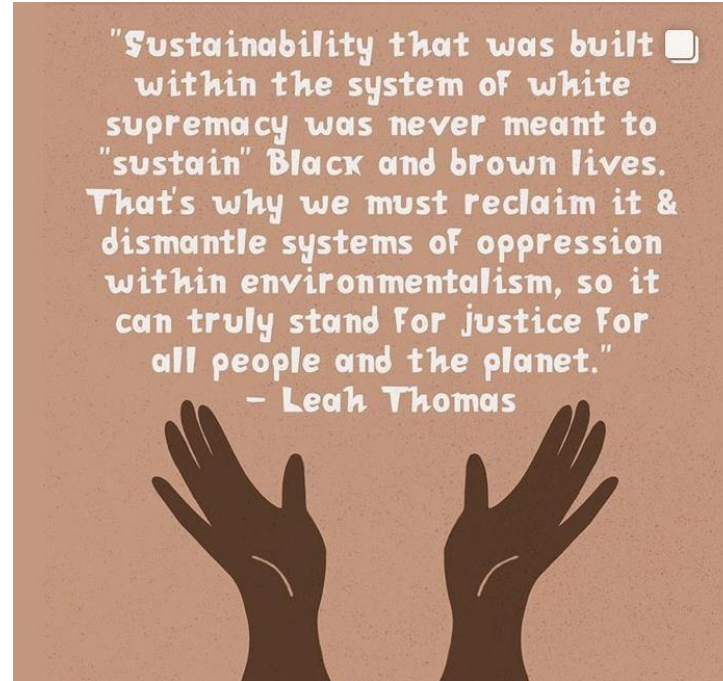
## WATCH THE VIDEOS

Learn how to avoid toxics  
and protect your health.

[SixClasses.org/videos](https://SixClasses.org/videos)



GREEN SCIENCE  
POLICY INSTITUTE



So much of our economy  
relies on the assumption that  
there is always an

**“AWAY”**

into which we can  
throw our waste.

**THE TERM "CARBON  
FOOTPRINT" WAS  
COINED AND  
POPULARIZED BY BP,  
THE WORLD'S 6TH  
LARGEST POLLUTER**

@CHICKSFORCLIMATE

just fantasizing about a world without  
single-use plastic that runs on renewable  
energy and thriving community gardens  
that feeds everyone with local, organic  
food, plus composting services





**1.**

Start with  
**ONE product**



**JLL Pittsburgh**  
Pittsburgh, PA  
LEED ID+C: Commercial Interiors,  
v2009 LEED Silver

# 2.

Prioritize  
**healthier**  
products



**Spring Lake Village**  
Santa Rosa, CA  
LEED BC+C: New Construction,  
LEED Certified

**3.**

Talk about  
**what is  
important to  
you**



**The David H. Koch Center for Cancer Care at  
Memorial Sloan Kettering Cancer Center**  
New York, NY  
LEED BD+C: Healthcare, v2009 LEED Gold

MATERIALS PLEDGE SIGNATORIES



ARROWSTREET

ARUP



bassetti architects



Bergmeyer

bnim

BORA

BRIGHTWORKS SUSTAINABILITY

Bruner/Cott ARCHITECTS

B|W|B|R

CALLISONRTKL

CANNONDESIGN



CHRISTOPHER CARVELL ARCHITECTS



Cushing Terrell

DIALOG

DIMELLA SHAFER

esg

EMERSON DESIGN

EWING COLE

GBD

GCI GENERAL CONTRACTORS

GG-loop

GOODYCLANCY ARCHITECTURE / PLANNING / PRESERVATION

HACKER



HED

hellmuth+bicknese ARCHITECTS

Hennebery Eddy Architects

HKS

HMC Architects

HMPH ARCHITECTS



Kirksey ARCHITECTURE

LAKE | FLATO



LMN

LEDDY MAYTUM STACY ARCHITECTS

Long Green Specs

LORD AECK SARGENT ARCHITECTS



LRS ARCHITECTS



m+a architects

mahlum

Mayer/Reed

MDS

MG2



MITHŪN

MOODY•NOLAN

Moore Architecture + Design, LLC



MSRDesign

m.thrailkill architect.llc



opsis

OTJ ARCHITECTS

OVERLAND



PAYETTE

PCA ARCHITECTURE PLANNING INTERIORS



PERKINS + WILL

QUINN EVANS



S|E A

SIEGEL & STRAIN Architects



SRG

stök



VMDO



Wight

WRNSSTUDIO

YOST GRUBE HALL ARCHITECTURE

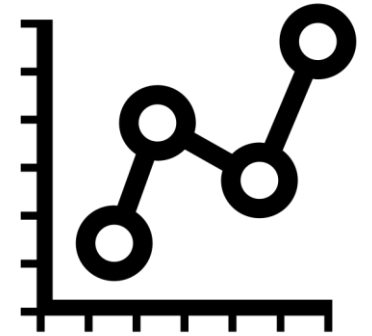
ZGF



**EDUCATION &  
AWARENESS**



**SET  
MATERIAL HEALTH  
GOALS**



**MONITOR  
PROGRESS**

**“To change everything  
you need everyone.”**

*- Dr. Ayana Elizabeth Johnson*

**Please go VOTE!**

**Thank  
You!**

**Dunbar High School**  
Washington, D.C.  
LEED BD+C: Schools, v2009  
LEED Platinum

